



## INTER-FAITH CHAPEL WORSHIP SERVICE

Sunday April 28, 2024

### SILENT MEDITATION

*God loves each of us as if there was only one of us to love.*

- St. Augustine

*There is nothing you can do today to make God love you any more, and  
there is nothing you can do today to make God love you any less.*

*God's love is full, impartial, and unconditional.*

- Rev. Richard Halverson

### PRELUDE

*Psalm 23*

Young

Dr. Holly Oberle, Director of Music

### WORDS OF WELCOME

Dr. Woodie Rea

### LIGHTING THE PEACE CANDLE

### INTROIT

*Love is the Touch*

Chancel Choir

### CALL TO WORSHIP

*Leader: In the victories and celebrations of life, God is with us.*

**ALL: We praise you O Lord, for the joys and blessings of life.**

*Leader: In the challenges and changes of everyday living, God is with us.*

**ALL: We thank you O Lord, for calming our spirits.**

*Leader: In all of life, God abides with us.*

**ALL: God abides in us through the Spirit of love given to us.**

**God calls us to love one another.**

**Let us worship God together in unity and in love.**

### INVOCATION

✠ **OPENING HYMN**      *Love Divine, All Loves Excelling*

**CALL TO CONFESSION**

Sam Beatty

**PRAYER OF CONFESSION**

**UNISON**

**O Lord, we confess that we don't always love as we could or should. We sometimes find it easier to be irritated than to reach out in love. We say the words but don't always mean them. We don't put love into action. Help us, O God, to be ambassadors of your love - whether it's easy or hard, noticed or unnoticed. You have loved us no matter what; help us to do the same. Amen.**

**WORDS OF ASSURANCE**

✠ **AFFIRMATION OF FAITH**

**We believe that God calls us to a ministry of love.**

**Beloved, let us love one another.**

**We believe that we are called to love our friends and our neighbors.**

**Love is from God.**

**We believe that we are called to love the one who hurts our feelings.**

**Everyone who loves, is born of God.**

**We believe that we are called to love the one who is cruel or selfish.**

**Everyone who loves, knows God.**

**We believe that God is love.**

**We believe that God loves deeply and sacrificially,**

**God loves completely and restoratively,**

**God loves generously and extravagantly.**

**We affirm our desire to love, as God has loved us. Amen.**

✠ **GLORIA PATRI**

**Glory be to the Father, and to the Son, and to the Holy Ghost;  
As it was in the beginning, is now, and ever shall be;  
World without end. Amen. Amen.**

✠ You are invited to stand as you are comfortable.  
*Music used by permission, CCLI #1683224*

# Love Divine, All Loves Excelling



1. Love di-vine, all loves ex-cel-ling, joy of heaven, to earth come down;  
2. Breathe, O breathe thy lov-ing Spir-it in-to ev-ery trou-bled breast;  
3. Come, al-might-y to de-liv-er, let us all thy life re-ceive;  
4. Fin-ish, then, thy new cre-a-tion; pure and spot-less let us be,



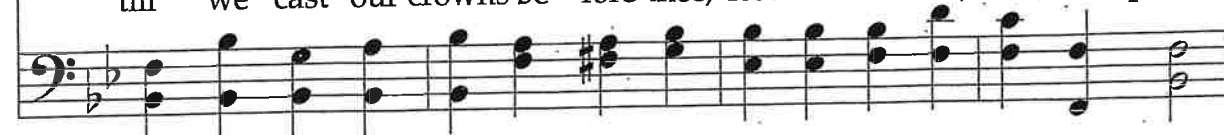
fix in us thy hum-ble dwell-ing, all thy faith-ful mer-cies crown;  
let us all in thee in-her-it, let us find thy prom-ised rest;  
sud-den-ly re-turn and nev-er, nev-er-more thy tem-ples leave.  
let us see thy great sal-va-tion per-fect-ly re-stored in thee;



Je-sus, thou art all com-pas-sion, pure, un-bound-ed love thou art;  
take a-way our love of sin-ning; al-pha and o-me-ga be;  
Thee we would be al-ways bless-ing, serve thee as thy hosts a-bove,  
changed from glo-ry in-to glo-ry, till in heaven we take our place,



vis-it us with thy sal-va-tion, en-ter ev-ery trem-bling heart.  
end of faith, as its be-gin-ning, set our hearts at lib-er-ty.  
pray, and praise thee with-out ceas-ing, glo-ry in thy per-fect love.  
till we cast our crowns be-fore thee, lost in won-der, love, and praise.



**SCRIPTURE READING**

1 John 4: 7-21

**PASTORAL PRAYER / LORD'S PRAYER**

**Our Father who art in heaven, hallowed be thy name. Thy kingdom come, thy will be done, on earth as it is in heaven. Give us this day our daily bread. And forgive us our sins as we forgive those who sin against us. And lead us not into temptation, but deliver us from evil. For thine is the kingdom, and the power and the glory, forever. Amen.**

**ANTHEM**

*Eagle's Wings Medley*  
Chancel Choir

Wilson

**SERMON**

“Humankind. Be Both”

Dr. Woodie Rea

**INVITATION TO THE OFFERING**

**OFFERTORY**

*Hymne*  
Dr. Holly Oberle Director of Music

Young

**DOXOLOGY**

(Tune: Lasst Uns Erfreuen)

**Praise God from whom all blessings flow;  
Praise God, all creatures here below;  
Alleluia! Alleluia!  
Praise God, the source of all our gifts!  
Praise Jesus Christ, whose power uplifts!  
Praise Spirit, Holy Spirit!  
Alleluia! Alleluia! Alleluia!**

✦ **PRAYER OF DEDICATION**

✦ **CLOSING HYMN**    *To Love Just Those Who Love You*

✦ **BENEDICTION**

✦ **BENEDICTION RESPONSE**

Tune: Ar Hyd Y Nos

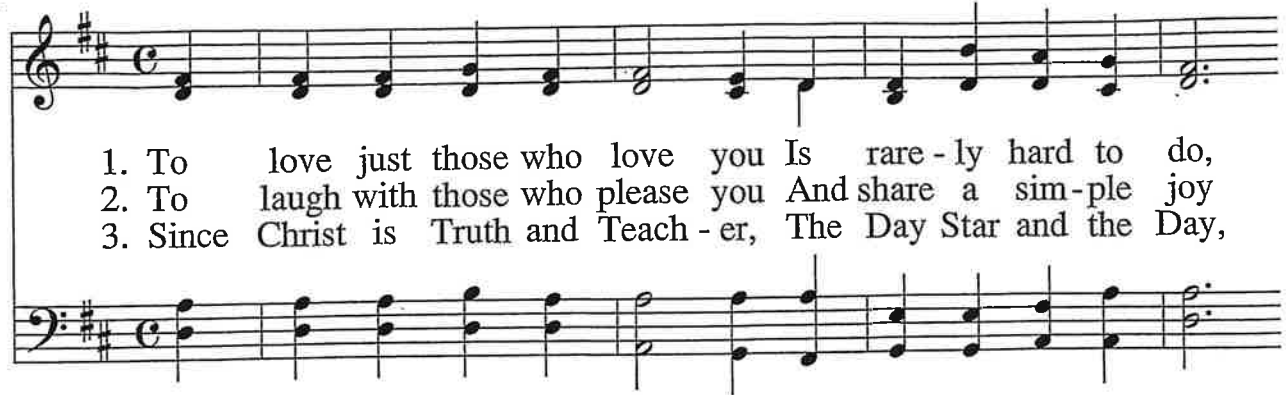
**“Go, my children, with my blessing, never alone.  
Waking, sleeping, I am with you, you are my own.  
In my love’s baptismal river I have made you mine forever.  
Go, my children, with my blessing, you are my own.”**

✦ **POSTLUDE**

*Gigue*  
Dr. Holly Oberle, Director of Music

Young

# To Love Just Those Who Love You



1. To love just those who love you Is rare - ly hard to do,  
2. To laugh with those who please you And share a sim - ple joy  
3. Since Christ is Truth and Teach - er, The Day Star and the Day,



For e - ven un - be - liev - ers Love those who love them too.  
Is dif - f'rent from en - dur - ing The peo - ple who an - noy.  
The Life and our Life - giv - er, Way - far - er and the Way,



But you must love, said Je - sus, Those you don't care a - bout,  
And those you hate, said Je - sus, Or wound you deep with - in,  
If you would come, said Je - sus, And my com - pan - ion be,



And feed them if they're hun - gry, Though you then go with - out.  
Are still your Fa - ther's chil - dren And must be claimed as kin.  
In love and joy and suf - f'ring You'll walk God's path with me.

# ***ANNOUNCEMENTS***

## **WELCOME**

We are delighted that you are with us today! The Inter-Faith Chapel is dedicated to serving as “*A House of Prayer for All People.*” While we worship and gather as a Christian congregation, we welcome people of all backgrounds, believing that we are all beloved children of God and able to enrich one another’s spiritual paths. We invite you to share with us on this journey.

## **GREETINGS TO VISITORS**

We extend a special welcome to our visitors and hope that you will return to be with us again soon. Please sign the *Visitor Register* next to our Sanctuary doors so that we might have a record of you being with us today. As you do, please take an Inter-Faith Chapel mug as our small gift and pick up a copy of our *Courier* newsletter that you might be informed of upcoming events in our faith community.

## **NEW MEMBER / AFFILIATE REGISTER**

If you are interested in joining The Inter-Faith Chapel, or in learning more about us, please let us know by signing the *Member / Affiliate Register* (located in the Narthex on the desk next to the coat room). We look forward to being in touch with you.

## **PRAYER SEMINAR**

**Tomorrow, Monday, April 29<sup>th</sup>**, Rev. Dr. Tim Bonner will be teaching a class on “*The Essentials of Prayer*” **at 10:00 AM** in the Fellowship Hall. This seminar will examine various Biblical models and teachings on prayer from both the Old and New Testaments. There will be information for those who might consider themselves novices in their personal prayer life, as well as new insights for those who would like to enhance their prayer/meditation life. No pre-registration is necessary to attend. Space is available and all are welcome!

## **PRAYER REQUESTS**

The Inter-Faith Intercessory Prayer Group is a team of dedicated individuals that are committed to praying for the specific concerns of this congregation. You may let them know of your prayer needs by submitting a prayer request card in the **Prayer Box** located in the Narthex. You may also submit your prayer requests electronically by going to our web-page [www.inter-faithchapel.org](http://www.inter-faithchapel.org) and scrolling down the home page and then clicking on “**How Can We Pray for You?**” Peace and prayers to you!

## **SPRING FOOD DRIVE**

The IFC Missions Committee is sponsoring a Food Drive on **Tuesday, May 7<sup>th</sup> and Wednesday, May 8<sup>th</sup>**. You may drop off your non-perishable food items under the Chapel portico between the hours of **10:00 AM - 2:00 PM**. Collected items will be given to Manna Food Center which works to end hunger in Montgomery County communities. See the May Courier for a suggested food list.

## **THE INTER-FAITH CHAPEL**

**3680 South Leisure World Blvd.  
Silver Spring, MD 20906**

**301-598-5312**

**[www.inter-faithchapel.org](http://www.inter-faithchapel.org)**

## **CHAPEL OFFICE HOURS**

**9:00 AM – 3:00 PM ♦ Monday – Friday**

*Rev. Dr. Woodie Rea, Senior Minister*

*Rev. Dr. Ramonia Lee, Minister of Congregational Life*

*Rev. Dr. Robert Perry, Minister Emeritus*

*Dr. Holly Oberle, Director of Music*

*Bonnie Bonner, Chapel Administrator*

*Joy Dufour, Administrative Assistant*

*Steve Buck, Gary Carpenter, Video Technicians and Sextons*